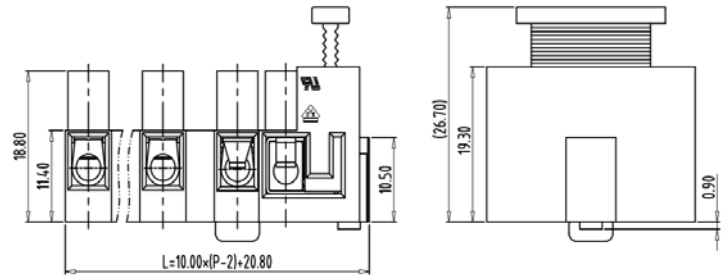
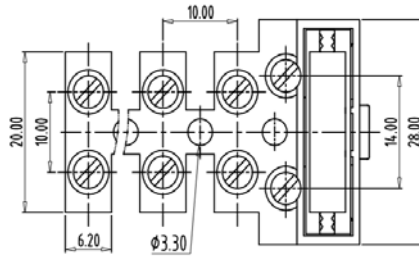
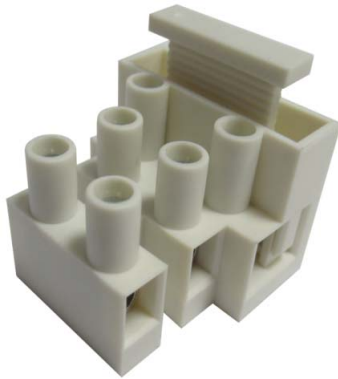


Fuse Terminal Block — TLF series — TLF-100SW-A



■ 图示(Pic. shown) : TLF-100SW-A-03P-W07S

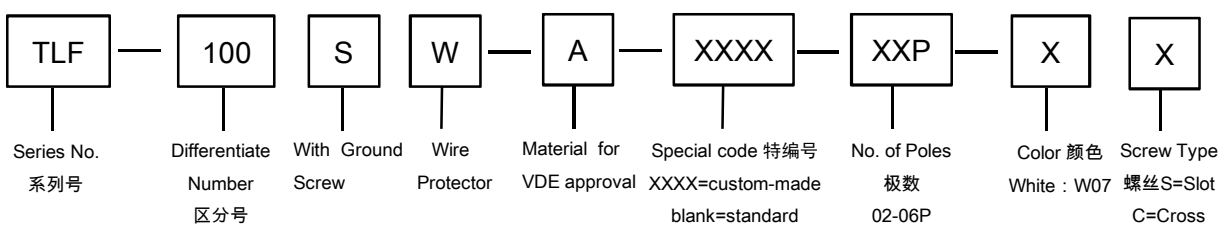
General.	Fuse Terminal Block Rated : 450V,24A , 2.5mm <sup>2</sup>
	Single row , 10.00mm pitch , 02-06 Pole
	Wire-to-Wire Connection
	Screw clamp unit: M3, 0.5Nm Max

认证 ( Approval )

技术参数 Technical Data	UL standard	IEC standard
---------------------	-------------	--------------

◆ FUSE BLOCK						
RATING		300V, 13A, 20-14 AWG Sol&Str		250V, 6.3A, 0.5-2.5mm <sup>2</sup>		
◆ TERMINAL BLOCK						
UL应用组别(UL Application group)	UL Application group			IEC过电压别/污染等级(IEC overvoltage category /pollution degree)		
IEC过电压别/污染等级(IEC overvoltage category /pollution degree)	B	C	D	III / 3	III / 2	II / 2
额定电压(Rated voltage)	300V	--	300V	--	450V	--
额定电流(Rated current)	20A	--	10A	--	24A	--
额定连接容量(Rated connection capacity)	18-12AWG Sol&Str			0.5-2.5mm <sup>2</sup>		
绝缘材料(Insulation Material)	PA66 UL94 V-0					
电流承载部件材料和镀层( Material & Plating of Current carrier )	Copper alloy , Ni plated					
绝缘电阻(Insulation Resistance)	500MΩ or more at DC500V					
耐电压(1分钟)(Withstanding Voltage/1Min)	Terminal Block: 2500V / Fuse Block: 2000V					
额定冲击电压(Rated surge voltage)	--					
接线螺丝(Wire clamp unit Screw) , 最大扭矩( torque Max. )	M3, 0.5Nm Max					
接地螺丝(Grounding Screw) , 扭矩(torque)	M3, 0.5Nm Max					
剥线长度(Wire stripping length)	Terminal Block: 7.0mm / Fuse Block: 7.0mm					
使用温度(Operating temperature)	Terminal Block:-30°C up to +105°C / Fuse Block: -30°C up to +40°C					

■ 订购方式(How to order)



Web:www.china-tianli.com      TEL:+86-574-6347-9600,6389-6436      Mail : sale@china-tianli.cn  
地址:中国浙江省宁波杭州湾新区庵东工业园区纬三路138号  
ADD : 138 , Weisan Rd.,Andong Development Zone, Hangzhou Bay Area, Ningbo, Zhejiang, China