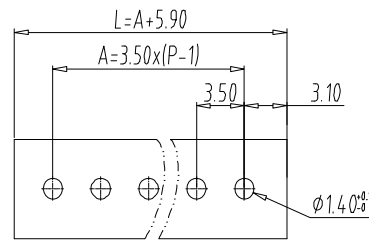
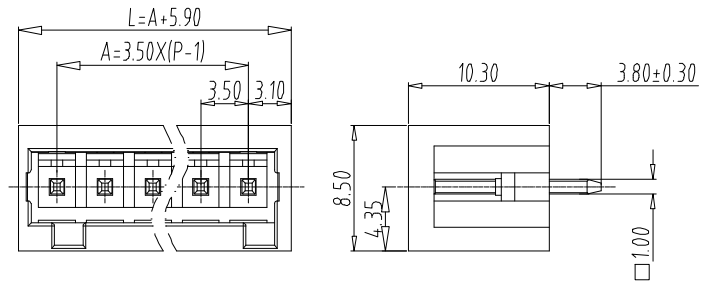


Multi Connection System — TLC series (Pin header) — TLCH-001V



PCB LAYOUT

图示 (Pic. shown) : TLCH-001V-04P-M17

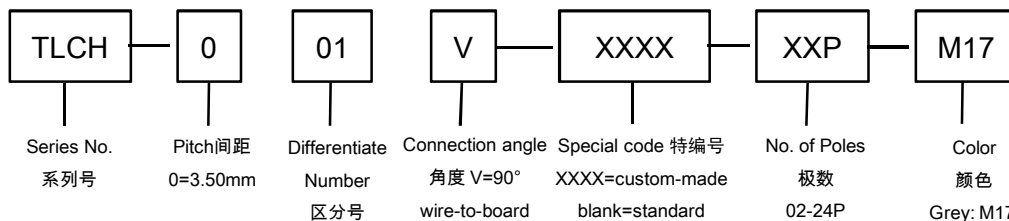
General. Multi Connection System Rated : 160V,12A
Single row , 3.50mm pitch , 02-24 Pole
Orientation:90°(plug-in to board)

认证 (Approval) :



技术参数 Technical Data	UL standard			IEC standard		
UL应用组别 (UL Application group)	UL Application group			IEC过电压别/污染等级 (IEC overvoltage category /pollution degree)		
IEC过电压别/污染等级 (IEC overvoltage category /pollution degree)	B	C	D	III / 3	III / 2	II / 2
额定电压 (Rated voltage)	300V	--	300V	160V	160V	320V
额定电流 (Rated current)	12A	--	10A	12A	12A	12A
额定连接容量 (Rated connection capacity)	--			--		
绝缘材料 (Insulation Material)	PA66 ; UL94-V0					
电流承载部件材料和镀层 (Material & Plating of Current carrier)	Copper alloy , Tin plated					
接线弹片材料 (Material of Clamp spring)	--					
绝缘电阻 (Insulation Resistance)	500MΩ or more at DC500V					
耐电压 (1分钟) (Withstanding Voltage/1Min)	AC2200V/Min					
额定冲击电压 (Rated surge voltage)	2500V					
接线螺丝 (Wire clamp unit Screw) , 最大扭矩 (torque Max.)	--					
固定螺丝 (Mounting Screw) , 扭矩 (torque)	--					
剥线长度 (Wire stripping length)	--					
使用温度 (Operating temperature)	-40°C up to +115°C					
焊接方式 (Soldering recommend)	Wave soldering ,260°C 5S Max (Single Wave) , 260°C 10S Max(Double Wave)					

订购方式 (How to order)



Web: www.china-tianli.com TEL: +86-574-6347-9600, 6389-6436 Mail : sale@china-tianli.cn
地址: 中国浙江省宁波杭州湾新区庵东工业园区纬三路138号
ADD : 138 , Weisan Rd., Andong Development Zone, Hangzhou Bay Area, Ningbo, Zhejiang, China

插头 (Female Connector)



P/N : TLCP-001
Wiring orientation :
180°(wire to plug-in)
Rated : 160V,12A , 1.5mm²
Spring clamp unit.



P/N : TLCPL-001
Wiring orientation :
180°(wire to plug-in)
Rated : 160V,12A , 1.5mm²
Spring clamp unit.